



# EVEREST

## ELEVATOR BUCKETS



**AUTHORISED REPRESENTATIVE / DEALER**

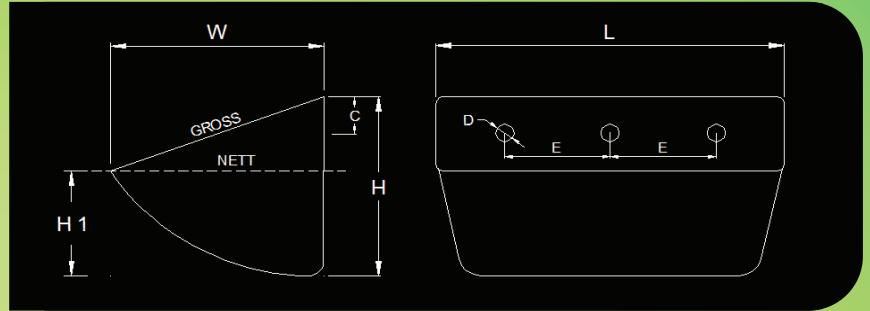
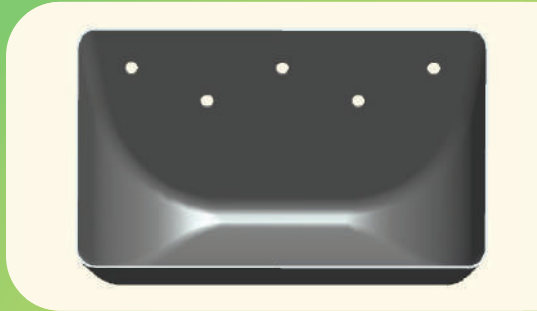
Blank white space for the authorized representative or dealer information.

# EVEREST

SEAMLESS STEEL ELEVATOR BUCKETS



## ULTRATEC - SERIES [TECHNICAL CHART]



SIZE CODE	BUCKET SIZE				MOUNTING HOLES				BUCKET WEIGHT [Kg.]		VOLUME [Ltrs.]	
	L [mm]	W [mm]	H [mm]	H1 [mm]	E [mm]	D [mm]	C [mm]	No. Of HOLES	Std. GAUGE	WEIGHT [Approx]	GROSS	NETT
5	127	112	95	60	75	8	30	2	18	0.30	0.675	0.600
6	152	115	95	60	95	8	30	2	18	0.36	0.850	0.685
7	177	115	95	60	55	8	30	3	18	0.40	0.950	0.800
8	203	130	115	70	75	8	30	3	16	0.63	1.450	1.225
9	230	148	130	105	75	10	30	3	16	0.90	2.400	1.700
10	254	148	130	105	90	10	35	3	16	0.95	2.650	2.150
12	304	148	130	105	90	10	35	5	16	1.10	2.850	2.350
14	356	170	130	100	90	10	35	7	14	1.80	4.625	3.750

- Free Flow Technology – Discharge Rate @ 97%.
- Specific made for Rice Milling, Parboiling & Cattle Feed Plants.
- Same Installation in Centrifugal Discharge Elevators where A-SERIES & S-SERIES of buckets fitted.
- Economical than other types of bucket.
- Less Power Consumption due to lower bucket weight.
- Available in Mild Steel & Stainless Steel Materials with holes as per belt or chain fittings.
- Welded front reinforcement also possible on customer demand.



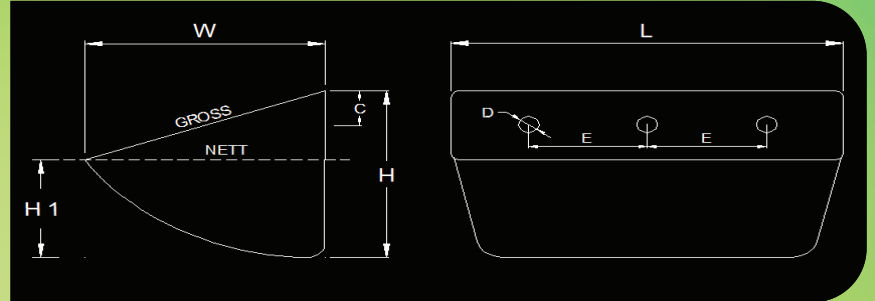
**QUALITY WINS THE RACE IN LONG RUN, ALWAYS.....**

# EVEREST

SEAMLESS STEEL ELEVATOR BUCKETS



## S - SERIES [TECHNICAL CHART]



SIZE CODE	BUCKET SIZE				MOUNTING HOLES				BUCKET WEIGHT [Kg.]		VOLUME [Ltrs.]	
	L [mm]	W [mm]	H [mm]	H1 [mm]	E [mm]	D [mm]	C [mm]	No. Of HOLES	Std. GAUGE	WEIGHT [Approx]	GROSS	NETT
4	102	92	70	50	50	8	20	2	18	0.20	0.400	0.325
5	124	110	80	55	70	8	25	2	18	0.28	0.650	0.550
5A	135	110	85	55	70	8	25	2	16	0.40	0.725	0.600
5B	138	125	95	65	70	8	25	2	16	0.43	0.800	0.700
6	152	115	90	45	95	8	25	2	16	0.40	0.875	0.650
7	177	115	85	55	100	8	30	2	16	0.55	1.050	0.750
7A	180	130	100	60	100	8	30	2	16	0.58	1.250	1.000
7B	188	140	95	60	100	8	30	2	16	0.65	1.400	1.200
7C	185	145	110	75	100	8	30	2	16	0.70	1.700	1.400
8	203	130	100	65	120	8	30	2	16	0.63	1.450	1.175
9	230	148	120	75	75	8	30	3	16	0.85	2.100	1.600
9A	238	165	110	75	120	10	35	2	16	0.90	2.600	2.000
9B	235	170	135	95	120	10	35	2	16	1.05	2.950	2.300
10	254	150	120	80	90	10	35	3	16	0.95	2.500	2.000
11	285	170	135	90	80	10	35	3	16	1.25	3.700	2.900
12	305	150	120	80	90	10	35	5	16	1.10	2.800	2.250
14	360	170	130	85	90	10	35	4	14	1.90	4.850	3.700
15	380	220	165	100	90	10	35	7	14	2.65	8.750	6.600
18	450	220	170	110	110	10	50	4	14	3.40	9.800	7.750



- Standard shovel type bucket design for slow or high speed Centrifugal Discharge Elevators.
- Excellent quality seamless bucket in Mild Steel & Stainless Steel materials.
- Superior elevating & discharging grain, flour, cattle feed at milling as well as silo sections.
- Available with holes suitable for Belt or Chain Fittings.
- Welded front reinforcement also possible on customer demand.

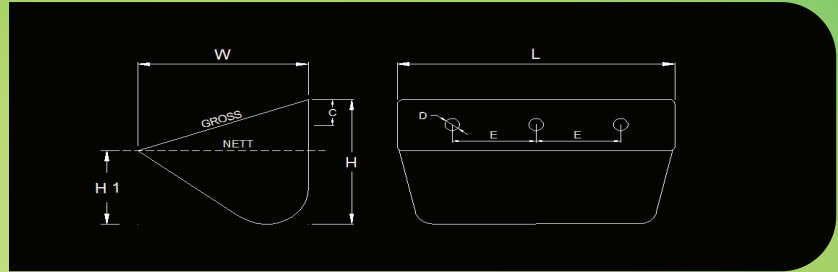
**QUALITY WINS THE RACE IN LONG RUN, ALWAYS.....**

# EVEREST

POLYMER ELEVATOR BUCKETS



## AA - SERIES [TECHNICAL CHART]



SIZE CODE	BUCKET SIZE				MOUNTING HOLES				BUCKET WEIGHT [ Kg. ]		VOLUME [ Ltrs. ]	
	L [mm]	W [mm]	H [mm]	H1 [mm]	E [mm]	D [mm]	C [mm]	No. Of HOLES	Std. THKNS	WEIGHT [Approx]	GROSS	NETT
4	102	85	95	55	50	8	30	2	3.60	0.06	0.325	0.230
5 X 4	127	90	100	65	75	8	30	2	3.80	0.09	0.600	0.450
5	127	110	110	65	75	8	30	2	3.80	0.09	0.775	0.550
6 X 4	152	90	110	62	95	8	30	2	3.80	0.11	0.750	0.550
6	152	110	110	60	95	8	30	2	3.80	0.11	0.975	0.650
7	177	110	110	65	55	8	30	3	4.00	0.14	1.200	0.750
8 X 4	203	90	110	65	75	8	30	3	4.00	0.15	1.150	0.800
8	203	120	140	85	75	8	30	3	5.00	0.19	1.600	1.100
9	228	135	165	100	75	10	35	3	6.00	0.30	2.350	1.850
10	250	135	150	90	90	8	35	5	6.00	0.32	2.700	1.900
12	304	135	155	95	90	10	35	5	6.00	0.42	3.100	2.250
12 X 8 B	304	185	210	130	110	10	35	5	6.80	0.65	6.100	4.000
14	355	160	160	85	90	10	35	7	7.00	0.56	4.600	3.100
16	405	195	230	140	100	10	35	7	7.00	0.85	9.500	6.500

- Standard A2 type bucket design for Centrifugal Discharge Elevators.
- Premium high impact food grade buckets available in polypropylene material.
- Use for agriculture free flowing materials like rice, wheat, corn, coffee, cattle feed industries.
- Substitute of steel buckets where temperature not more than 90°C & sharp edge materials handling.
- Due to less bucket weight minimise maintenance cost of bucket elevator as there lower friction between pulley, shaft & bearings.



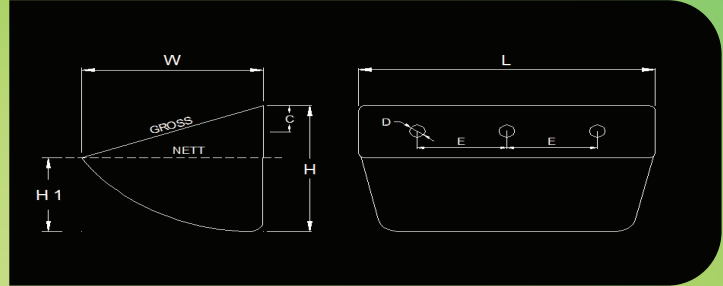
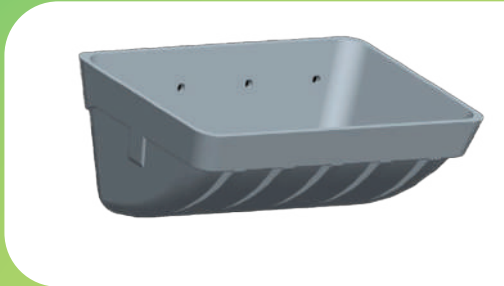
**QUALITY WINS THE RACE IN LONG RUN, ALWAYS.....**

# EVEREST

POLYMER ELEVATOR BUCKETS



## S - SERIES [TECHNICAL CHART]



SIZE CODE	BUCKET SIZE [ Inches ]				MOUNTING HOLES [ mm ]				BUCKET WEIGHT [ Kg. ]		VOLUME [ Ltrs. ]	
	L [mm]	W [mm]	H [mm]	H1 [mm]	E [mm]	D [mm]	C [mm]	No. Of HOLES	Std. THKNS	WEIGHT [Approx]	GROSS	NETT
4	105	92	70	52	50	8	25	2	3.50	0.07	0.325	0.300
5	135	110	85	55	70	8	25	2	3.80	0.11	0.600	0.525
6	152	115	105	65	95	8	25	2	4.00	0.13	1.000	0.650
7	180	130	95	60	100	8	30	2	4.00	0.15	1.300	1.150
8	200	125	105	65	120	8	30	2	4.50	0.20	1.600	1.100
9	238	170	105	75	120	10	35	2	6.80	0.33	2.600	1.900
15	380	225	175	125	90	10	35	7	7.00	0.90	8.200	6.500



- Standard Shovel type bucket design for slow & high speed Centrifugal Discharge Elevators.
- Premium high impact food grade buckets available in polypropylene material.
- Use for agriculture free flowing materials like rice, wheat, corn, coffee, cattle feed industries.
- Substitute of steel buckets where temperature not more than 90°C & sharp edge materials handling.
- Due to less bucket weight minimise maintenance cost of bucket elevator as there lower friction between pulley, shaft & bearings.



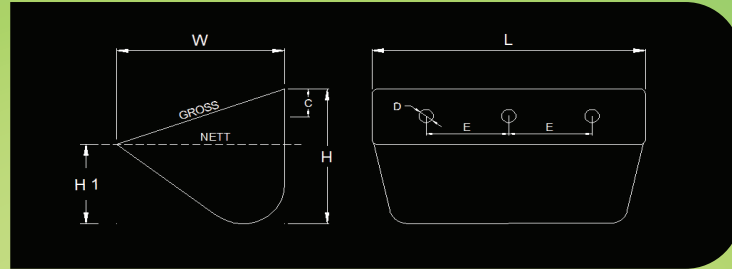
**QUALITY WINS THE RACE IN LONG RUN, ALWAYS.....**

# EVEREST

SEAMLESS ELEVATOR BUCKETS



## AA - SERIES [TECHNICAL CHART]



SIZE CODE	BUCKET SIZE				MOUNTING HOLES				BUCKET WEIGHT [Kg.]		VOLUME [Ltrs.]	
	L [mm]	W [mm]	H [mm]	H1 [mm]	E [mm]	D [mm]	C [mm]	No. Of HOLES	Std. GAUGE	WEIGHT [Approx]	GROSS	NETT
3	82	78	75	45	40	8	20	2	18	0.15	0.235	0.190
3 ½	90	80	85	50	40	8	25	2	18	0.18	0.300	0.210
4	102	85	90	52	45	8	30	2	18	0.20	0.390	0.255
5	127	92	100	60	75	8	30	2	18	0.29	0.600	0.425
6 X 4	152	90	100	60	95	8	30	2	18	0.34	0.770	0.525
6	152	102	110	55	95	8	30	2	18	0.37	0.925	0.650
7	177	105	110	60	55	8	30	3	18	0.42	1.125	0.735
8 X 4	203	90	100	65	75	8	30	3	16	0.50	1.125	0.800
8 X 4 ½	203	105	105	65	75	8	30	3	16	0.60	1.350	0.900
8	203	120	135	75	75	8	30	3	16	0.70	1.550	1.200
9	230	140	155	90	75	10	35	3	16	0.95	2.400	1.900
10	254	140	155	90	90	10	35	3	16	1.00	2.700	2.000
12	304	140	155	90	90	10	35	5	16	1.23	2.950	2.250
12 X 8	304	178	195	95	110	10	35	5	14	1.90	5.550	3.250
14	356	160	165	85	90	10	35	7	14	1.85	4.700	3.200
14 X 6	356	160	180	90	90	10	35	7	14	1.95	5.500	3.800
16 X 7	405	155	185	110	100	10	35	7	14	2.20	7.000	4.800
16 X 8	400	170	170	75	100	10	35	7	14	2.25	6.800	4.400
16 X 8 ½	415	190	195	90	100	10	35	7	14	2.60	7.500	5.000
20	510	195	220	100	100	10	35	7	10	5.00	11.500	5.600



- Standard A2 type bucket design for Centrifugal Discharge Elevators.
- Premium Seamless Bucket available in Mild Steel & Stainless Steel materials.
- Use for Agriculture and Industrial free flowing fine or small lump materials.
- Available with holes suitable for Belt or Chain Fittings.
- Welded front reinforcement also possible on customer demand.

**QUALITY WINS THE RACE IN LONG RUN, ALWAYS.....**